

15" Honda Accord Installation Manual

Installation step

1 Follow the steps below to take out OEM CD



1、拆开档位挡板左右装饰条。
1. take out both left and right plastic cover



2、拧开储物盒左右固定螺丝并将储物盒拆下。
2. unscrew the left and right screw and use fry tool to remove the plastic board



3、用套筒扳手拆下固定主机上的2个螺丝。
3. Unscrew the 2 screws on the unit



4、拆下原车主机上盖板。
4. take out cover from OEM Unit



5、拆下主机（原车）。
5. take out the OEM unit

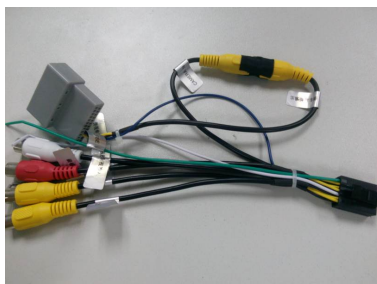
2. Take out the OEM A/C board and hazard light button to the unit, install the A/C board to the plastic frame and screw it to the radio.



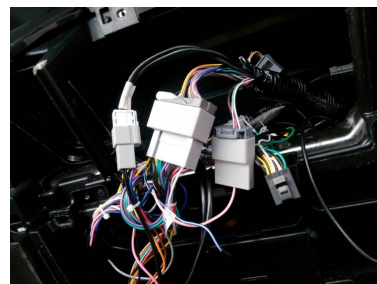
3.1 Honda Accord L wire picture



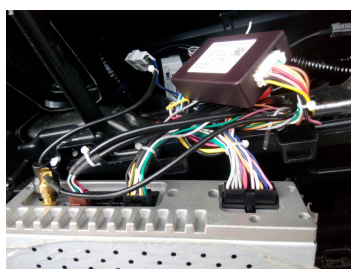
main cable in box



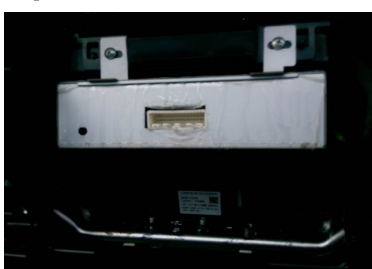
connect the reverse output and input



Power cable and reverse cable connect to the car



Connect the GPS antenna and radio antenna and connect the decoder box to the white connector



Use screw on the OEM to install the unit



Use the main connection to connect the unit and the board

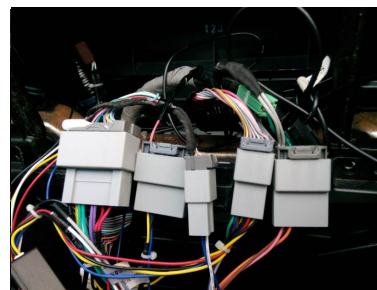
3.2 Honda Accord H wire picture



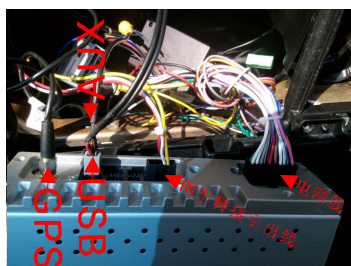
main cable in box



install the reverse connector



Power cable and reverse cable connect to the car



Connect the GPS antenna and radio antenna and connect the decoder box to the white connector



Use screw on the OEM to install the unit

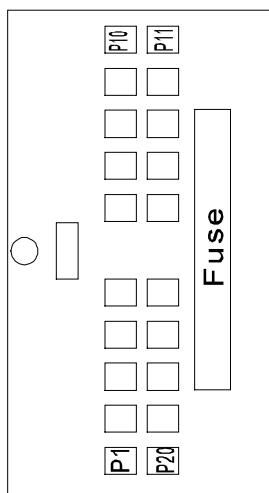


Use the main connection to connect the unit and the board

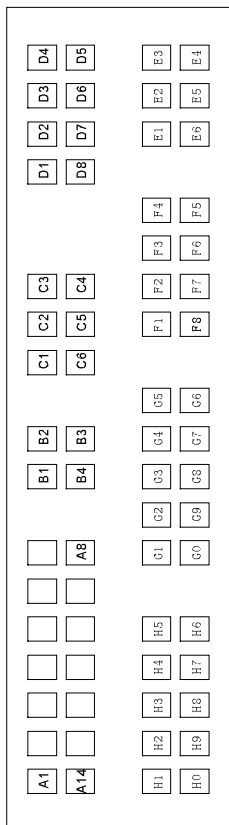
5. After aligning the buckle position, gently press the navigation edge to put back the related part and cover to the position



GPS ANT



1	ILL	11	RI +
2		12	RI +
3	IR3	13	RI +
4	CAB RX	14	RR +
5	FKEY IN	15	RR -
6	PARCANG	16	BATT
7	ACC	17	GND
8	FR +	18	FKEY IN2
9	FR +	19	CAN TX
10	FL +	20	ANT CONT
			BACK



A	1	2	3	4	5	6	7
	BACK	BACK_VID	CHESHI_VID	F_VID_OUT	CHESHI_POWER	EXT_VID_OUT2	EXT_VID_OUT1
	8	9	10	11	12	13	14
	GND	GND	FON_VIEW_POW	GND	GND	GND	BACK_POW
B	1	2	3	4			
	BUS-	CAN1_L	CAN1_H	BUS+			
C	1	2	3	4	5	6	
	VBA_12V	GND	GND	Ir1	DVR_VID	ACC	
D	1	2	3	4			
	Dm1	Dp1	Dm2	Dp2			
	5	6	7	8			
	GND	USB_5V	GND	USB5V			
E	1	2	3	4	5	6	
	GND	GND	GND	AUX_R	AUX_L	AUX_VID	
F	1	2	3	4			
	GND	TV_LIN	TV_12V	GND			
	5	6	7	8			
	Iir2	GND	TV_RIN	TV_CVBS			
G	1	2	3	4	5		
	GND	DVD_L	GND	12V	TX		
	6	7	8	9	0		
	RX	ACC	GND	DVD_R	DVD_VID		
H	1	2	3	4	5		
	GND	GND	RCA_RL	GND	NC		
	6	7	8	9	0		
	GND	SLIR	RCA_RR	RCA_FR	RCA_FL		