

CV-F631 vertical screen for 13 Ford Explorers (12.1-inch)

Installation instructions

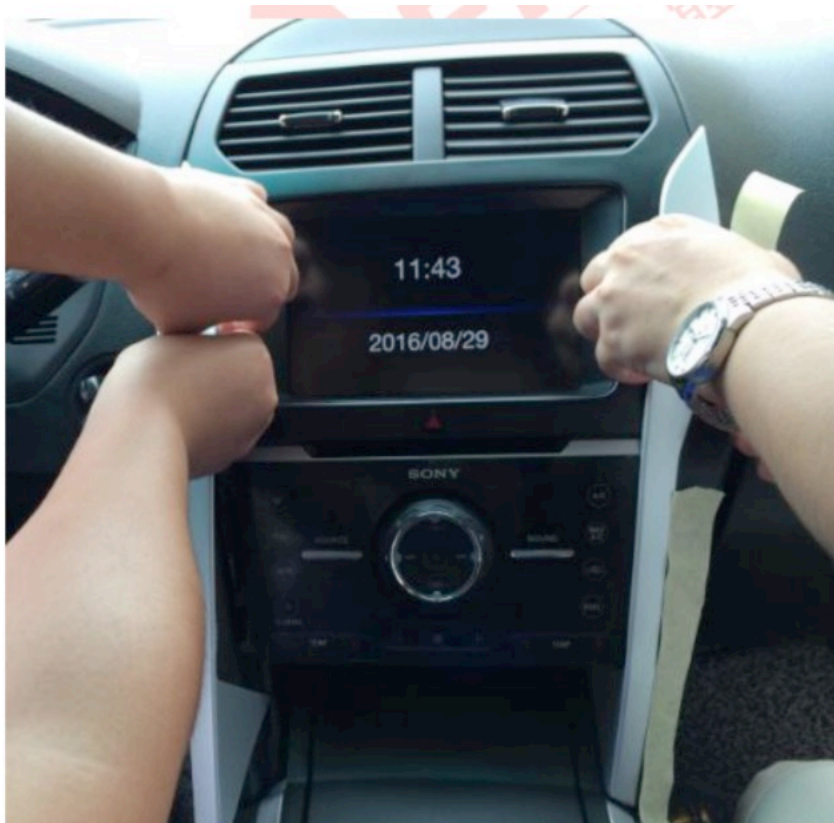
I. Fits Vehicles: 13 Ford Explorers

II, supports the original car features: rear view cam, steering wheel control, ambient lights, air conditioning control

III, accessories included: USB adapter cable, radio antenna adapter cable, the decoder box for oem camera, the oem camera adapter cable, Dual USB cable, backup cam video harness, CANBUS decoder box, power adapter harness, USB board, AUX board, AUX adapter cable, video harness, the OBD adapter cable (not used for premium oem radio), AUX cable, air conditioning control panel metal back cover, BM2.5 * 6 screws, pair of brackets, BM5.0 * 6 screws

IV, the installation process:

1, remove the left and right side trims



2. Remove the screws indicated

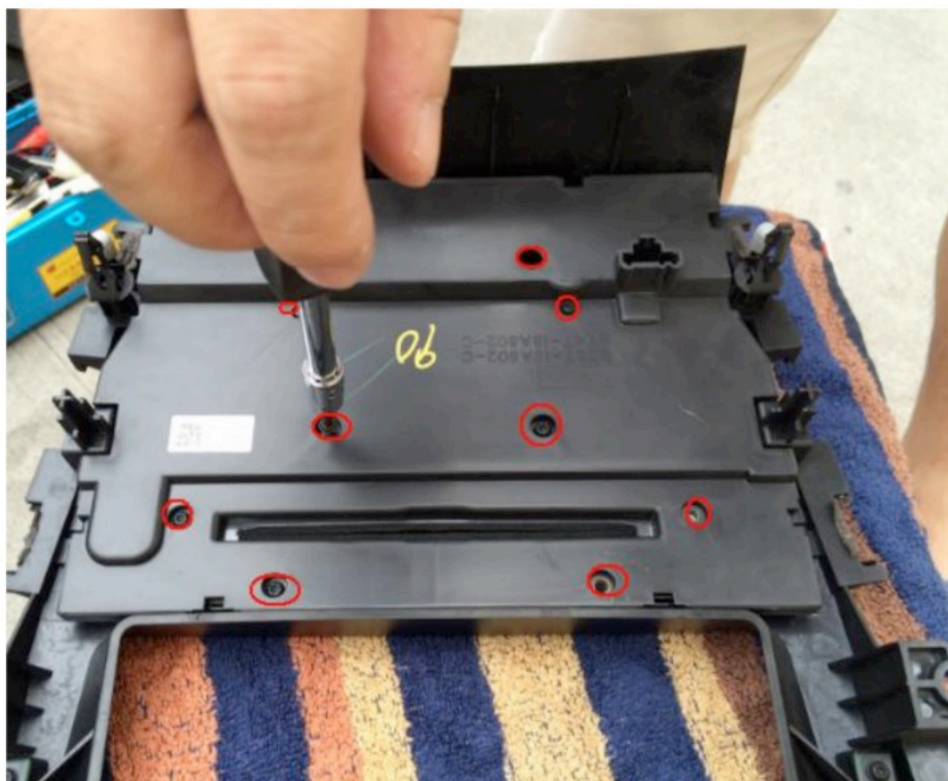


3. Remove the OEM face panel, and remove the connectors at the back



4. Get the air conditioning control board

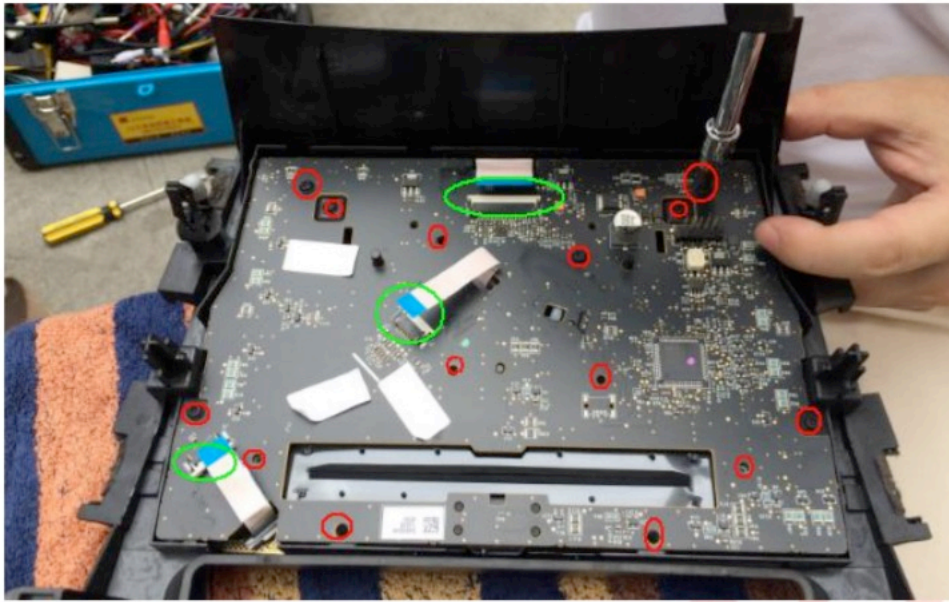
1) Remove the rear cover screws indicated



2) disengage the clips indicated, and then remove the back cover



3) Disconnect the three cables circled in green on the air conditioning control board and remove the screws circled in red



4) Remove the screws that secure the frames and then remove the upper and lower frames



5) Pull out the air conditioning control knob and remove the chrome ring



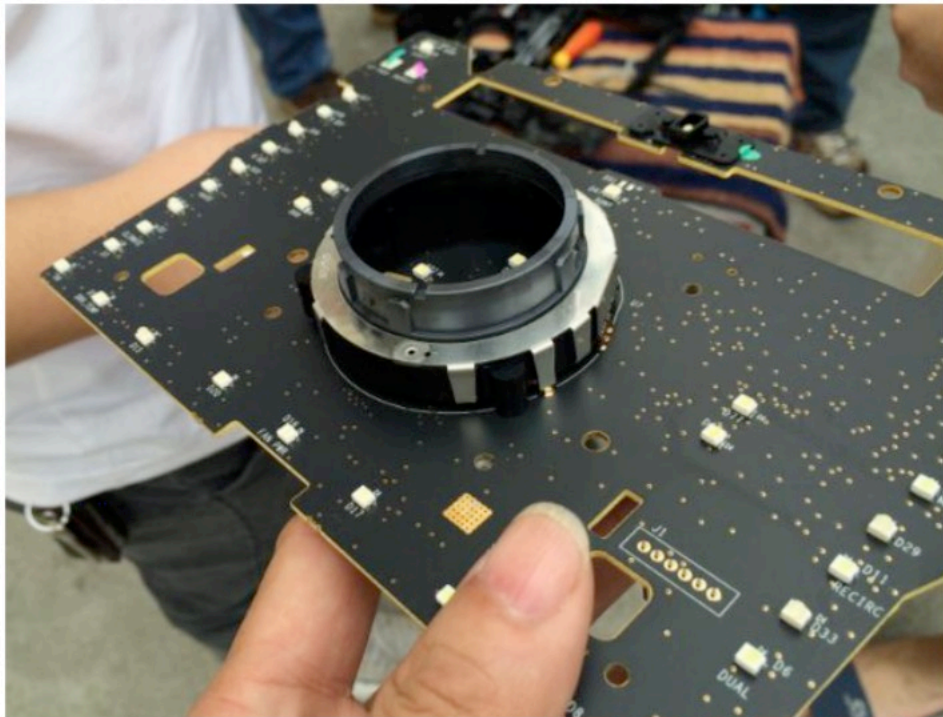
6) Use tweezers to disengage the clips securing the knob retaining ring, and then remove the knob retaining ring







7, then remove the air conditioning control board



8, Secure the air conditioning control panel to the air conditioning control panel metal back cover, and then cover with the oem plastic back cover, And fix with screws;

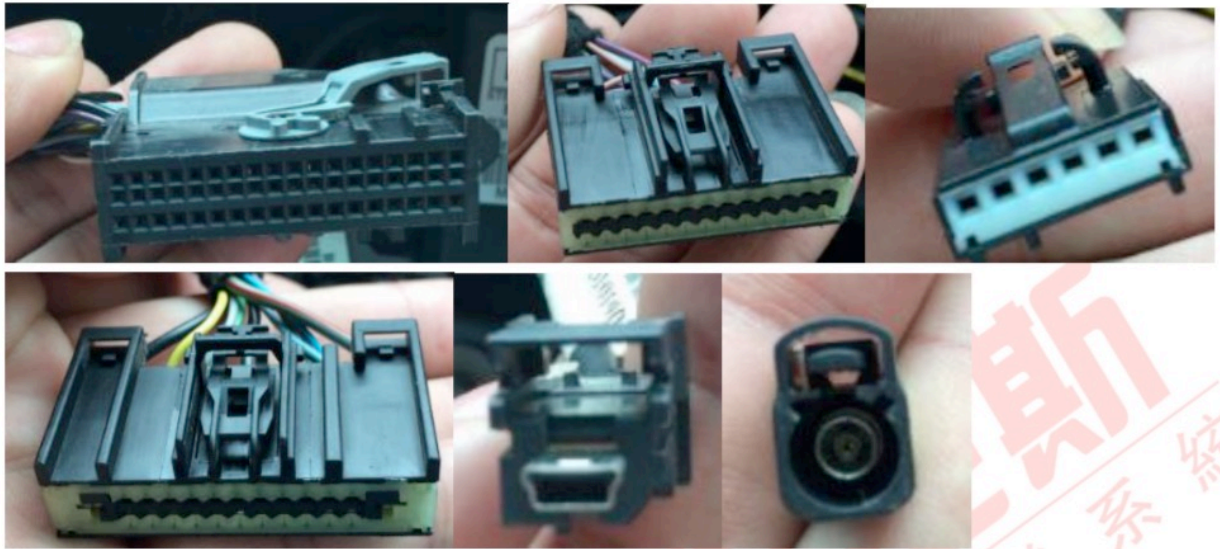




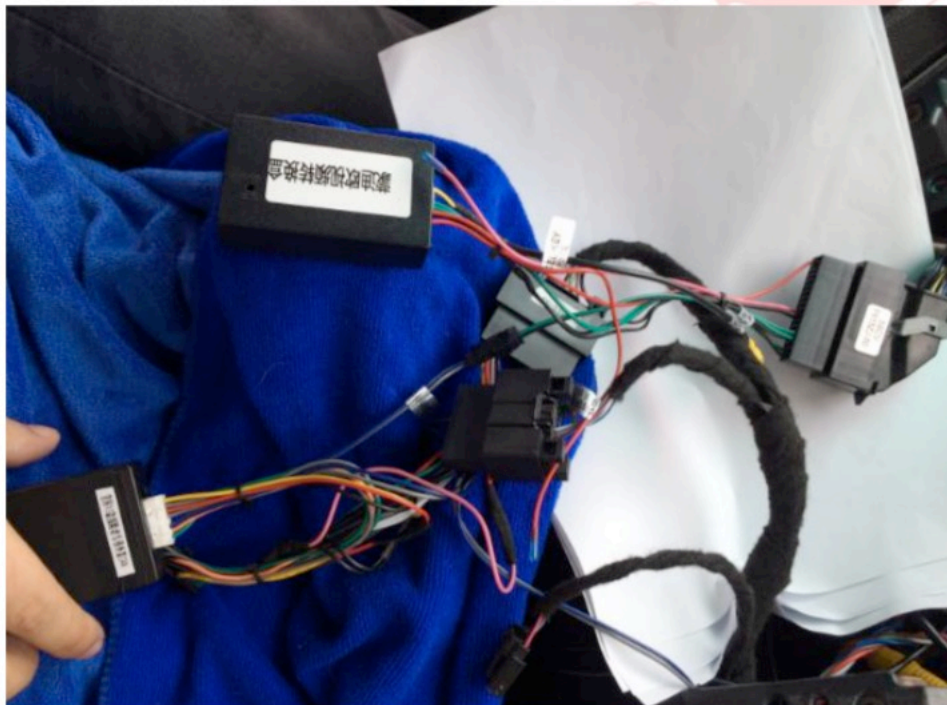
9. Remove the oem radio

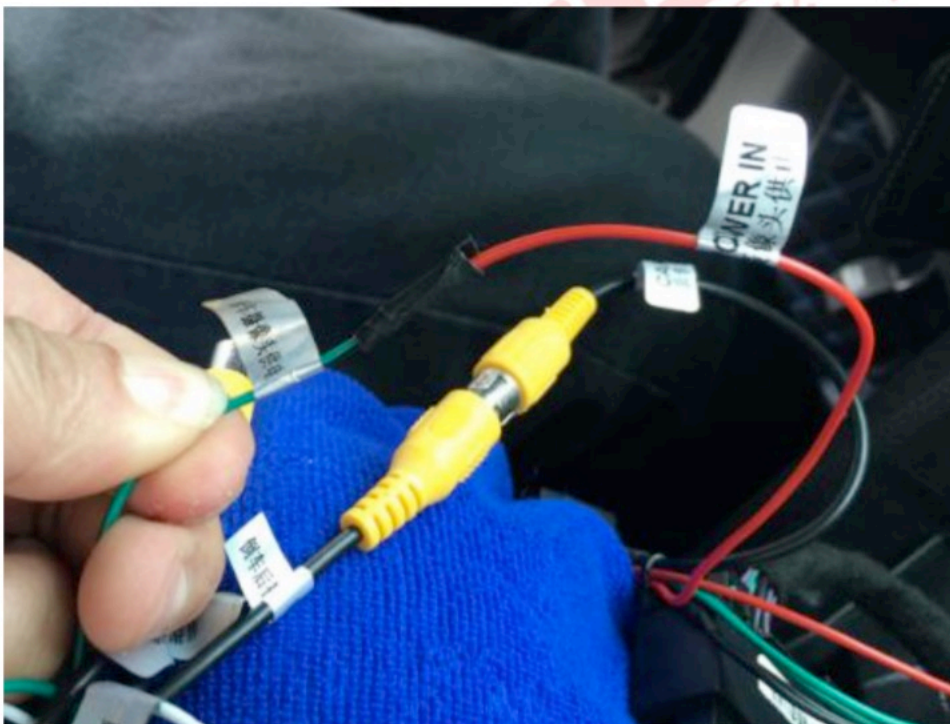
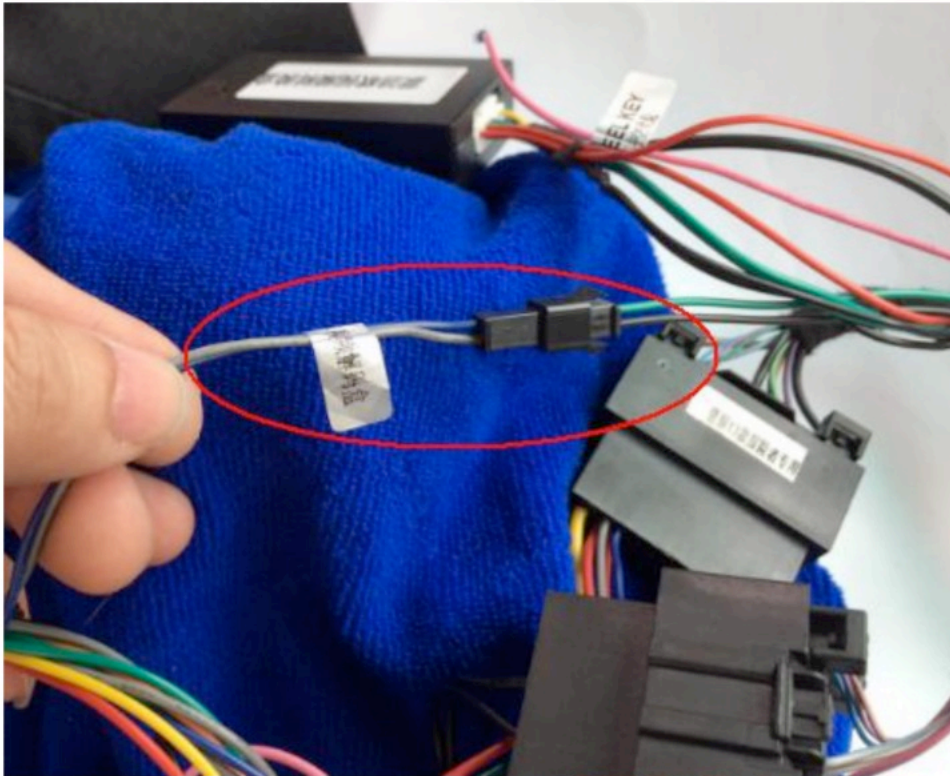


10, unplug the connector harnesses at the back (connectors shown below)



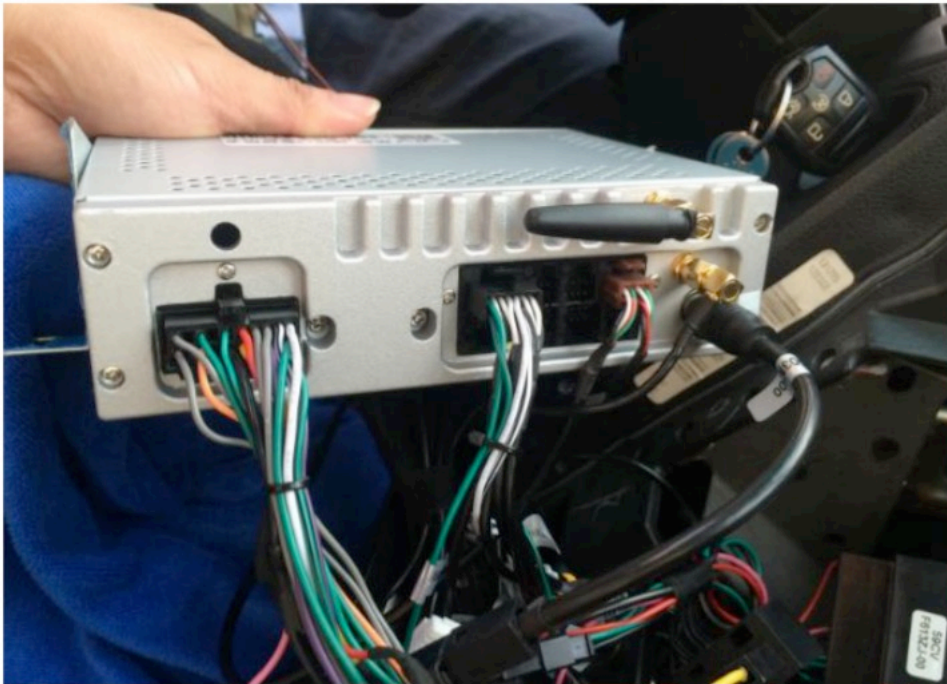
11, Connect harness of the new unit with matching oem connectors





12, remove the board inside OEM USB / AUX box, and replace with USB board supplied with the new unit, then connect USB adapter cable, the other end of the adapter cable goes to a USB port of the new unit, connect the connectors(power harness, video/camera harness,

usb harness, WIFI antenna, GPS antenna, radio antenna) shown below to the brain of the new unit

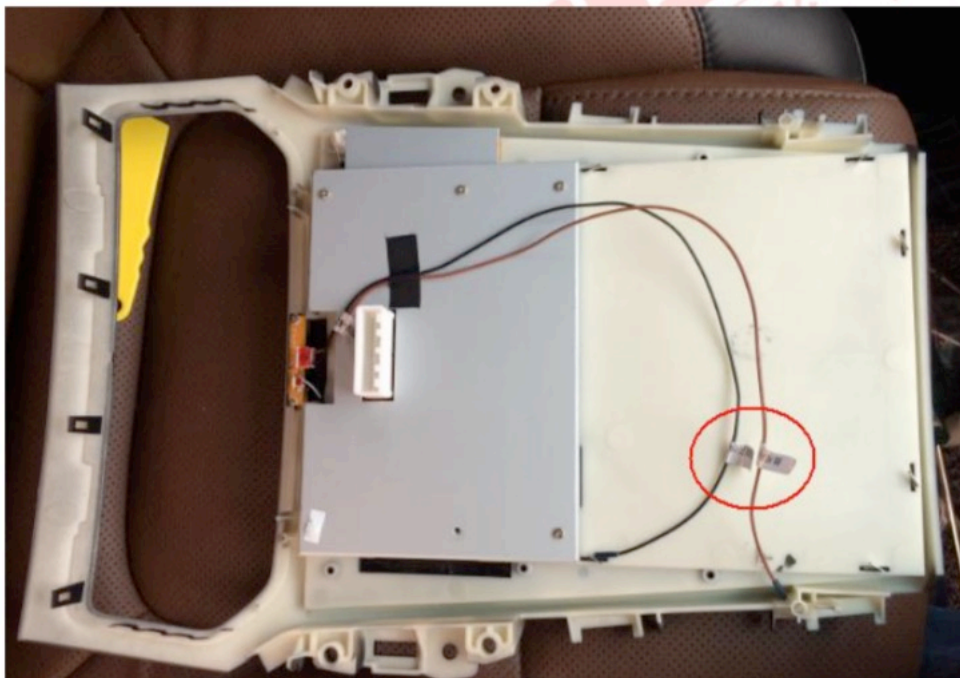


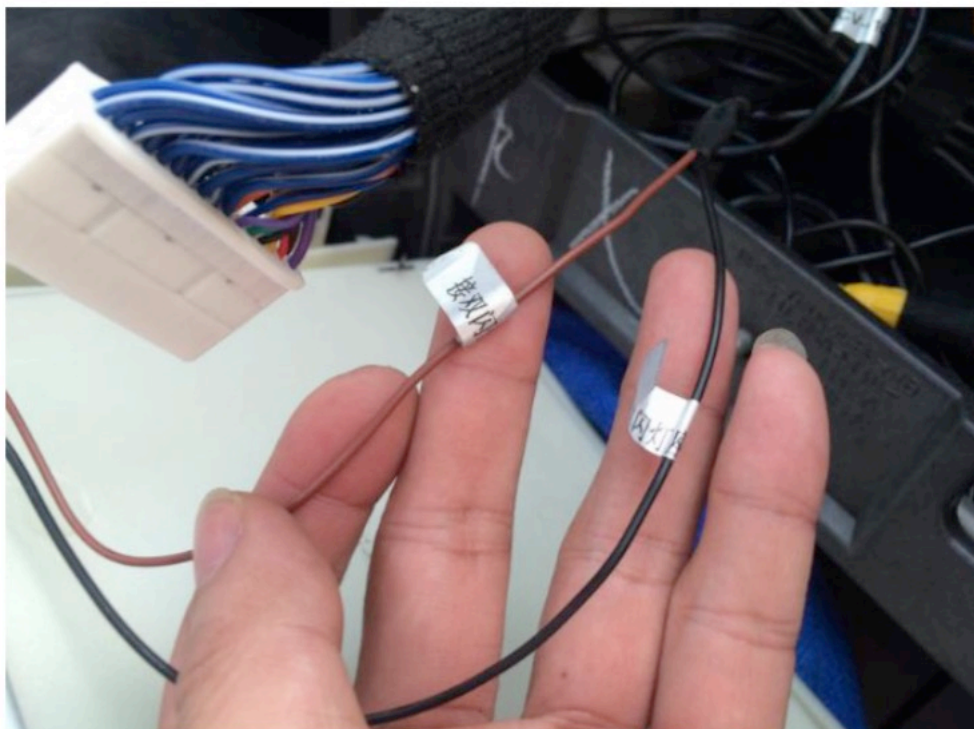
13, Secure mounting brackets, and then secure the brain of the new unit to the car



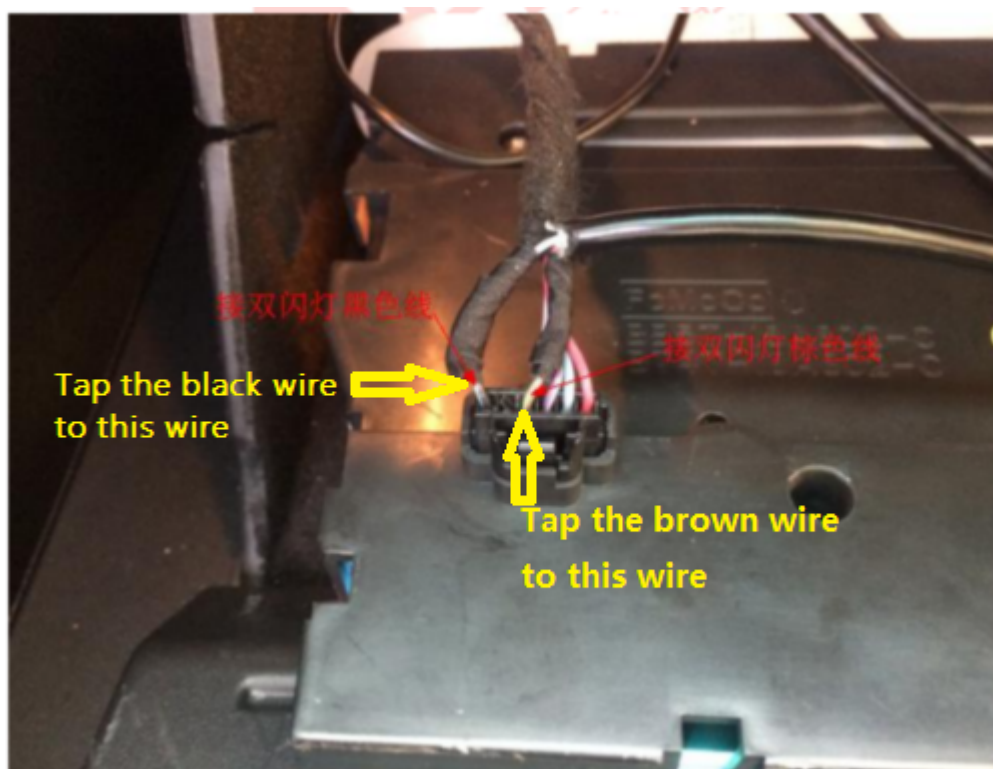


14, route the black and brown hazard light extension wires to car storage box





15, put the air conditioning control panel prepared in step 8 into the car storage box and connect the connector at the back, then tap the black and brown hazard light extension wires into the the lines of the connector indicated below



16, after double checking everything, power on the vertical screen to test navigation, radio, air-conditioning control, hazard lights, USB ports, ambient lighting, rearview cam, *etc.* If everything works as intended, neaten up the harnesses, secure the screen with the four screws, and put back the left and right trims.



汽车之家
影音娱乐

