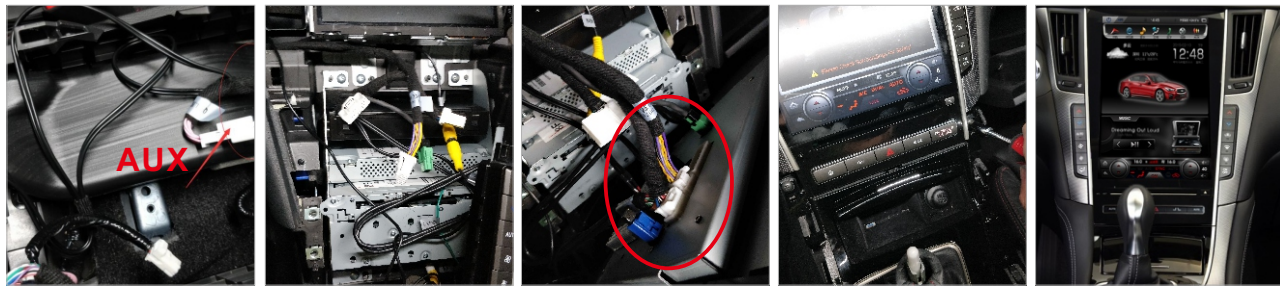


# Infiniti install steps

Model : Q50L  
Tools : 1.rimer 2.Turn-screw

### 3.Remove car middle control as below

9 Behind the original gear box storage box below the transfer AUX line, machine screen plug as shown in the figure below



# INFINITI

## 12.1” Q50L navigation

### operation and installing steps



Car type setting:setting-advance setting- password8861  
-choose car type when you choose car type:reset key to  
restart machine

- 1.Original car with rear view, choose Q50 Low
- 2.Original car with 360 panorama, without seat heating function, choose q50l middle
- 3.Original car with 360 panorama, with seat heating function, choose q50l high

number	name
1	GPS antenna
2	speaker
3	Universal USB Output Cable
4	DVR Adapter Cable
5	video input output cable
6	Q50L original AUX cable
7	Q50L Protocol adapter Cable
8	Q50L rear View 360 panorama transfer Cable
9	Q50L small speaker transfer cable
10	Left and right loading hardware bracket:



## install steps

Model : Q50L  
Tools : 1.rimer 2.Turn-screw

### 1.Remove car middle control as below

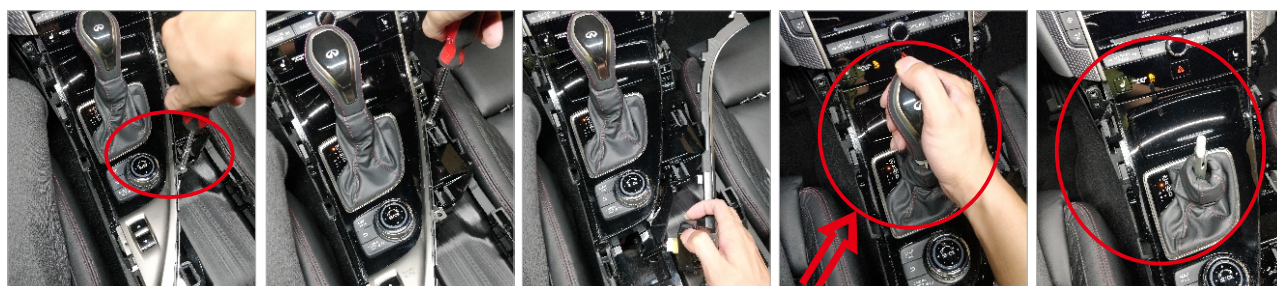
- 1** Remove the original car decorative panels with the screwdriver



- 2** remove the original car two side panels, and remove the screen screws



- 3** Take the panel screw:remove the decorative panel , and remove the retaining handle as below picture showing



- 4** Dismount block panel gear panel, remove the air outlet trim strips on both sides of the original car display screen



## install steps

Model : Q50L  
Tools : 1.rimer 2.Turn-screw

### 2.Remove car middle control as below

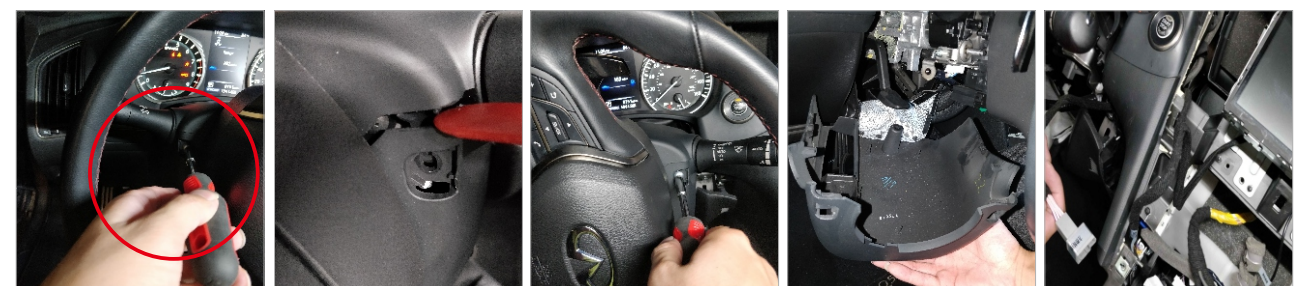
- 5** Remove the screws on both sides of the original car display with a screwdriver and remove the main panel with a warping board



- 6** Remove the original car screen to connect the machine with the cable to see the label to transfer, remove the steering wheel plastic cover to transfer the steering wheel adapter



- 7** Switch the steering wheel to switch the line, remove the plastic cover under the steering wheel as shown below



- 8** Remove the original car screen to connect the machine to see the label to transfer, remove the steering wheel plastic cover switch steering wheel adapter

